



Ratepayer Lab

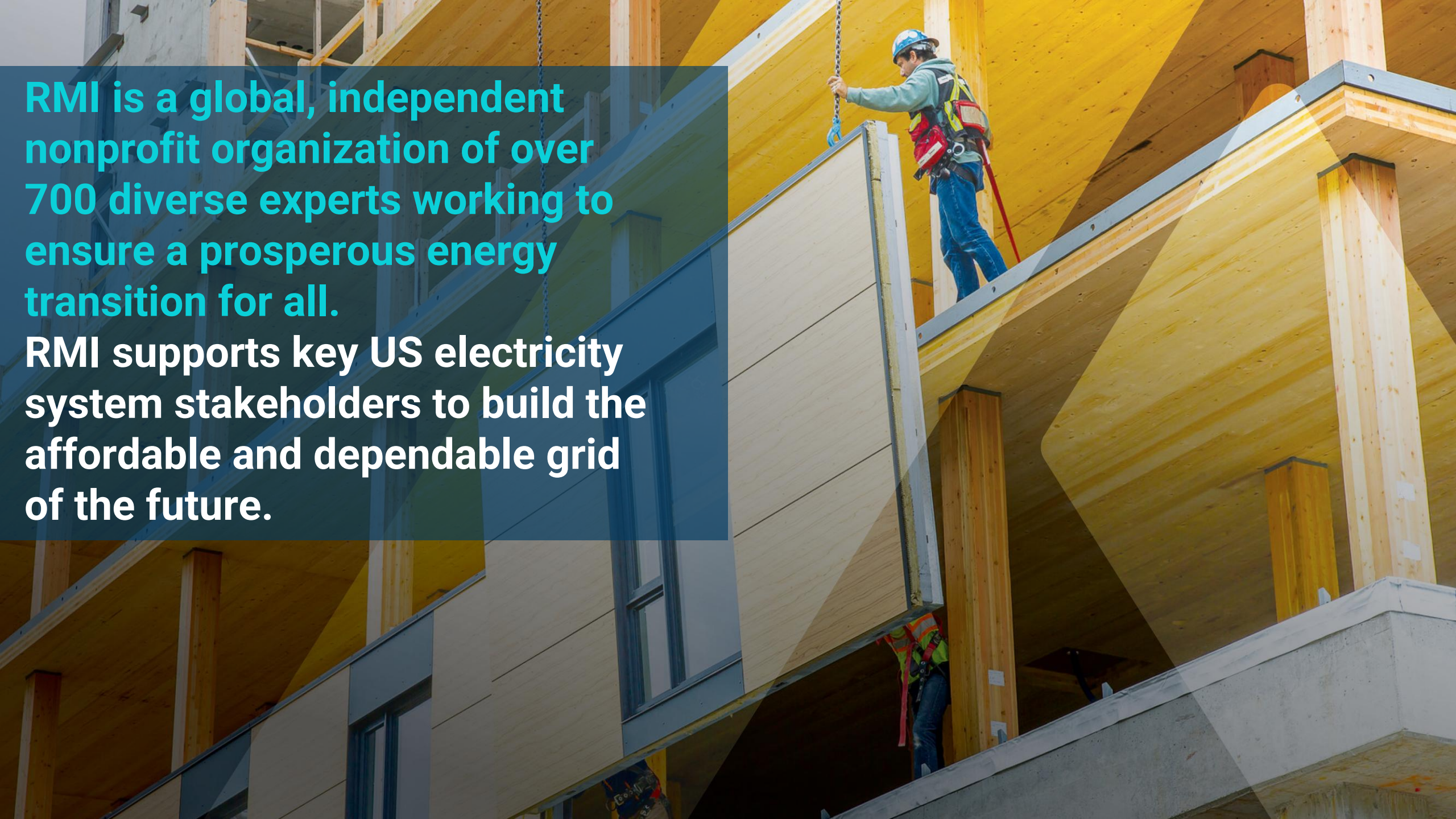
RMI's new platform to assist consumer advocate offices address affordability challenges

NASUCA Presentation

November 2025.

RMI is a global, independent nonprofit organization of over 700 diverse experts working to ensure a prosperous energy transition for all.

RMI supports key US electricity system stakeholders to build the affordable and dependable grid of the future.



Agenda

01

Tools

02

Reports

03

Research

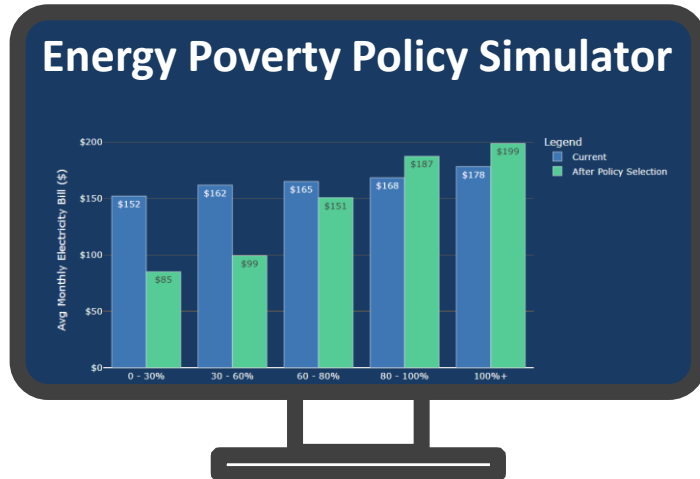
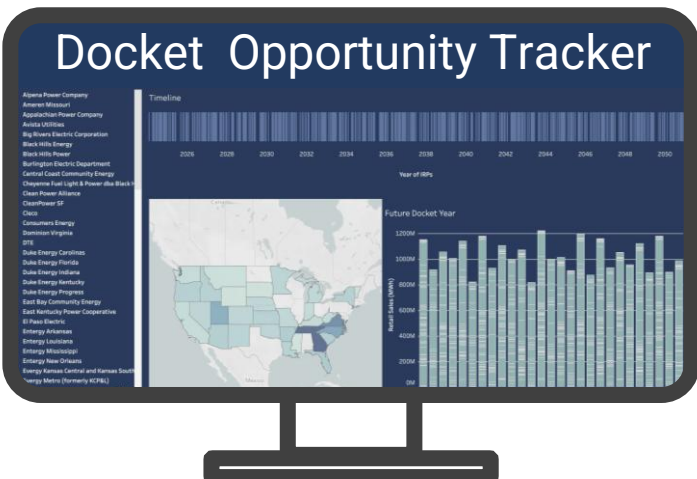
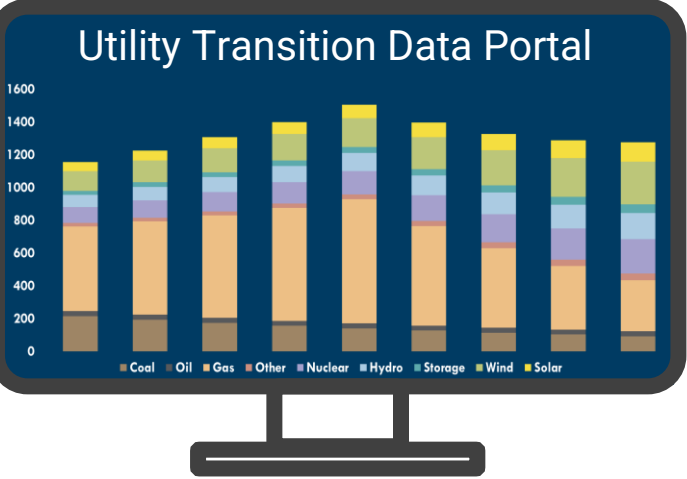
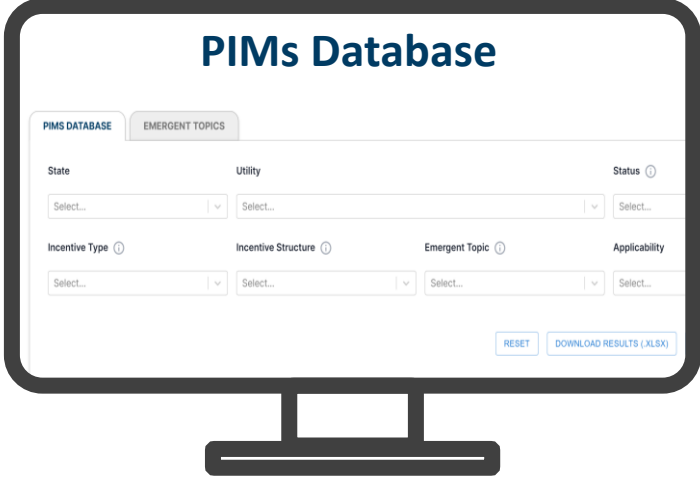
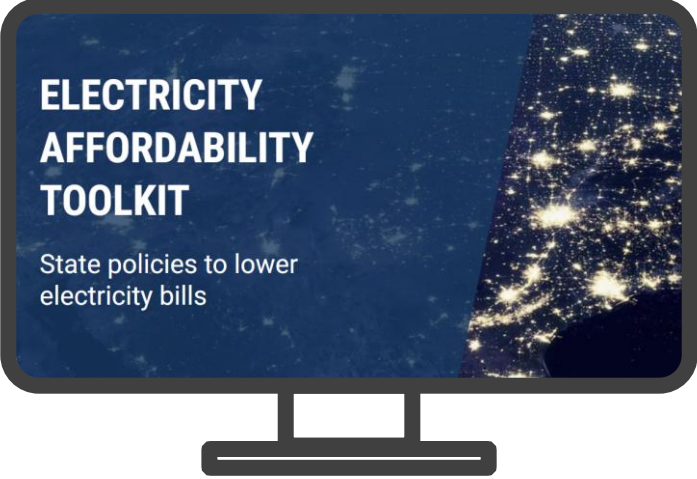
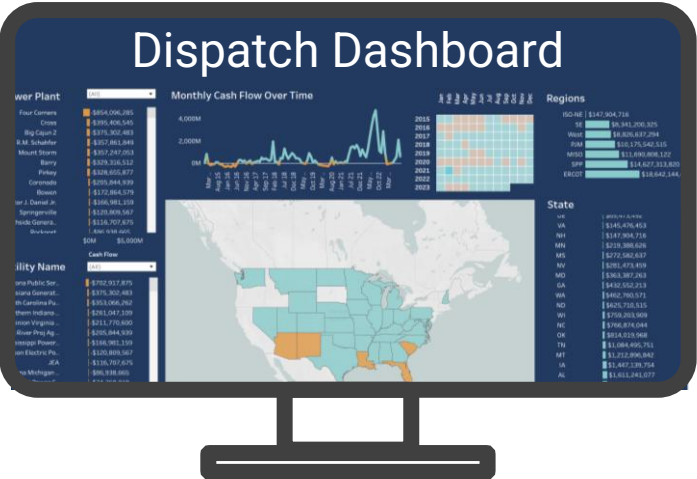
04

Workshop & Facilitation

05

Contested Dockets

Tools



Reports



ELECTRICITY

How to Leverage Cost Allocation to Enable Rapid, Affordable, and Equitable Electrification:

2025 | REPORT

Regulators can design fair, forward-looking cost allocation to fund proactive grid upgrades and accelerate equitable electrification.



ELECTRICITY

Large Energy Users Want Power. Here's How to Protect Other Ratepayers from the Costs.

2025 | ARTICLE

Designing large load tariffs with strong safeguards can reduce the risk of cost shifting, but adoption of them varies.



ELECTRICITY

As the Government Shutdown Freezes Low-Income Assistance Funds, PUCs Can Help

2025 | ARTICLE

As LIHEAP funding stalls, millions face energy insecurity; PUCs act to prevent shutoffs and protect struggling families.



ELECTRICITY

Fixing Multiyear Rate Plans

2025 | REPORT

This report by RMI and Synapse Energy Economics helps utility stakeholders design multiyear rate plans to ensure they support cost containment.



ELECTRICITY

How Low-Income Customer Programs Lower Energy Costs for Everyone

2025 | ARTICLE

Protecting vulnerable utility customers through proven programs reduces energy bill debt and reduces system-wide costs.



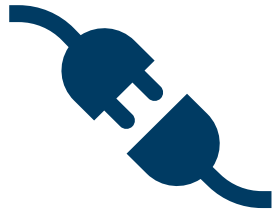
ELECTRICITY

Disconnections Handbook

2025 | REPORT

A report detailing US utility disconnections and outlining reform options for public utility commissions to protect households and reduce shutoffs.

Research

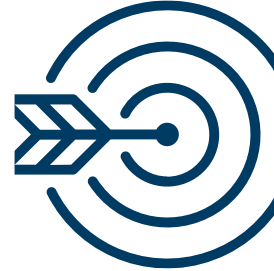


Disconnections

Low Income
Programs



Fuel Cost
Sharing Policy



PBR Metrics

Load
Forecasting



Large Load
Tariffs

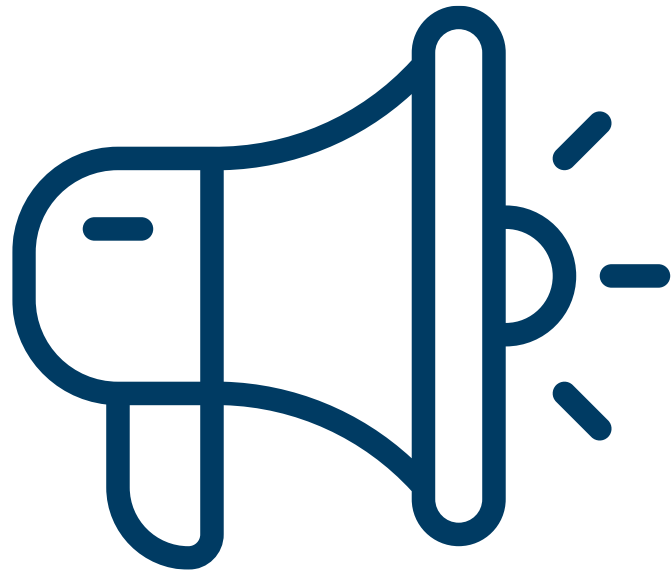
Facilitation and Workshops

Leveraging soft power to address hard problems



Contested Dockets

Comments



Discovery



Testimony



Focus on Affordability Priorities

Not comprehensive list

Cost Control and Allocation

- Fuel cost management
- Financial issues
- Performance-based regulation
- EE and customer programs
- Planning and procurement
- Cost allocation
- Creation of rate classes

Safeguards

- Energy assistance
- Discount Rates
- Disconnections
- Arrearage management
- Demographic-focused customer programs
- Addressing emerging issues (e.g. cliff populations)

Questions

Joe Daniel, jdaniel@armi.org